

Wild & Scenic Rivers Alternative Management Plan

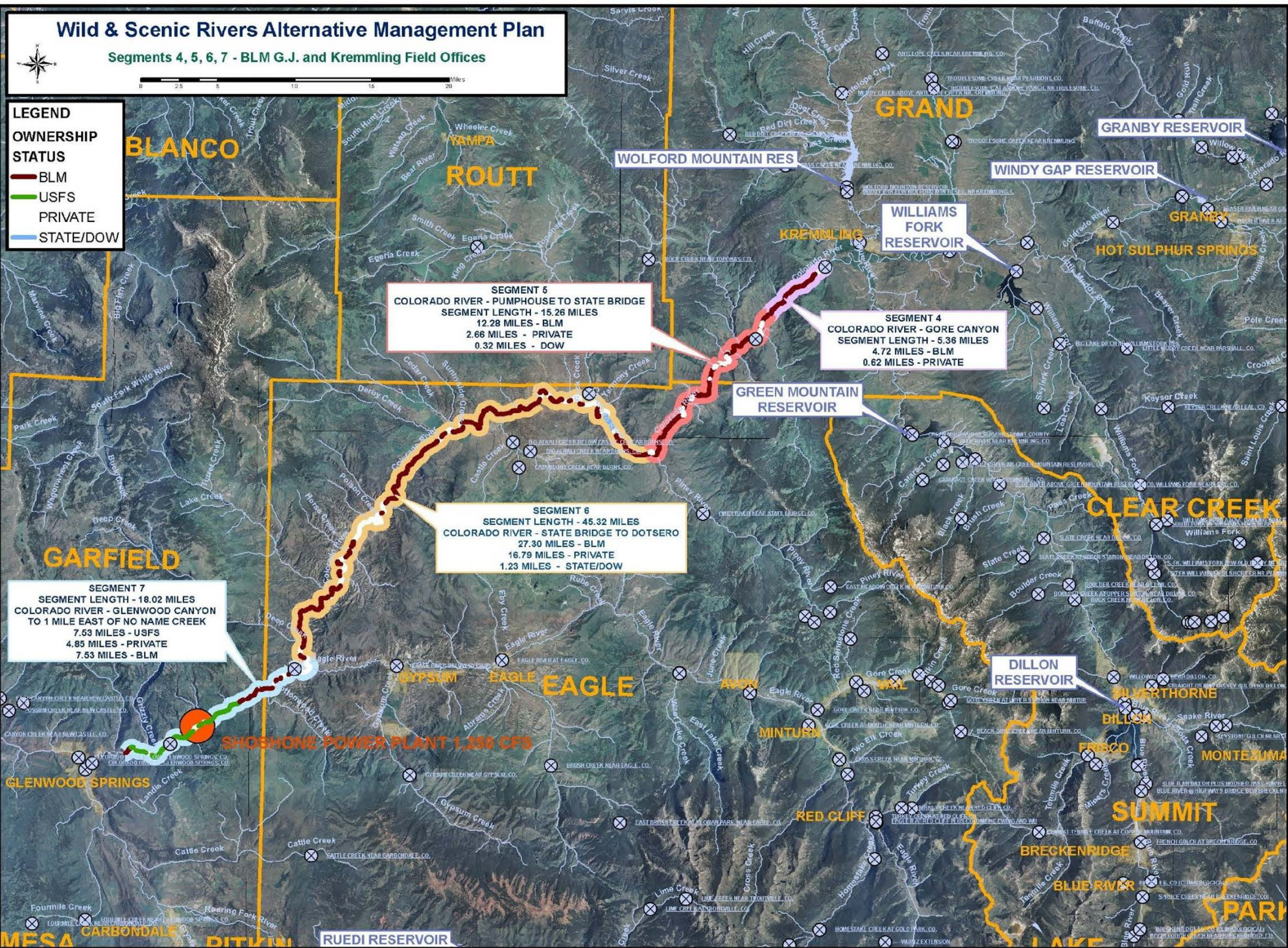
Segments 4, 5, 6, 7 - BLM G.J. and Kremming Field Offices



LEGEND

OWNERSHIP STATUS

- BLM
- USFS
- PRIVATE
- STATE/DOW



SEGMENT 5
 COLORADO RIVER - PUMPHOUSE TO STATE BRIDGE
 SEGMENT LENGTH - 15.26 MILES
 12.28 MILES - BLM
 2.66 MILES - PRIVATE
 0.32 MILES - DOW

SEGMENT 4
 COLORADO RIVER - GORE CANYON
 SEGMENT LENGTH - 5.36 MILES
 4.72 MILES - BLM
 0.62 MILES - PRIVATE

SEGMENT 6
 COLORADO RIVER - STATE BRIDGE TO DOTSERO
 SEGMENT LENGTH - 45.32 MILES
 27.30 MILES - BLM
 16.79 MILES - PRIVATE
 1.23 MILES - STATE/DOW

SEGMENT 7
 COLORADO RIVER - GLENWOOD CANYON
 TO 1 MILE EAST OF NO NAME CREEK
 7.53 MILES - USFS
 4.85 MILES - PRIVATE
 7.53 MILES - BLM

SHOSHONE POWER PLANT 1,356 CFS